

Development of the University's Comprehensive Internationalisation Competence

I. University Profile

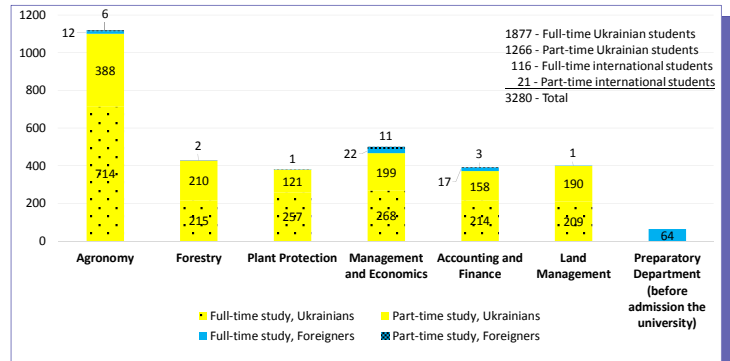
History.
KhNAU was founded on 5 October 1816 by the Decree about foundation of Agricultural Institute in Marymont (Poland). It was the first Agrarian Institute in the Russian Empire. With the beginning of World War I, the Institute was evacuated to Kharkiv.

Mission.
Training European and global specialists with high intellectual and professional potential, as well as the creation, systematization, preservation and dissemination of modern scientific knowledge to improve the quality of life of people.

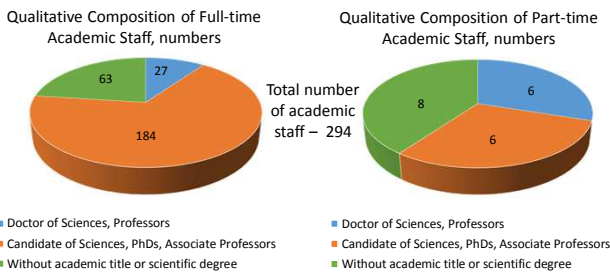
Location.
The University is situated in the suburbs of the city Kharkiv (2 km from the city boundaries and 25 km from downtown). The territory of the University is 106,3 ha which includes the Dendrology Park (22.3 hectares) and Experimental Field (over 70 ha). In addition, KhNAU has Educational and Experimental Forestry (over 8 thousand ha), Educational Farm (about 2 thousand ha).

Strong areas.
KhNAU mainly oriented on the education of rural youth and working with rural communities, as well as on scientific research, in the field of sustainable rural development. Mainly specialised on Agronomy, Forestry, Management and Economic, Accounting and Finance, Plant Protection and Land Management.

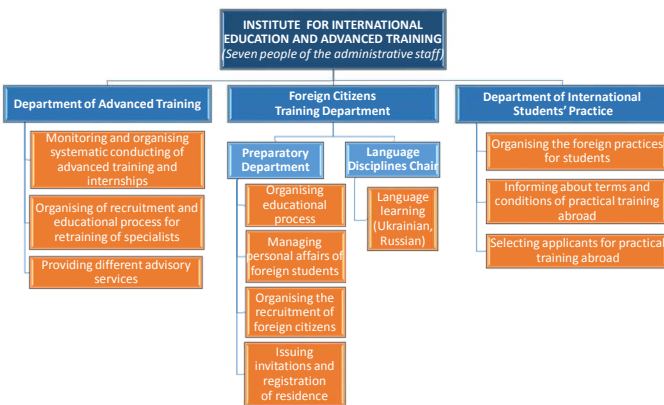
II. Number of Students at the Faculties



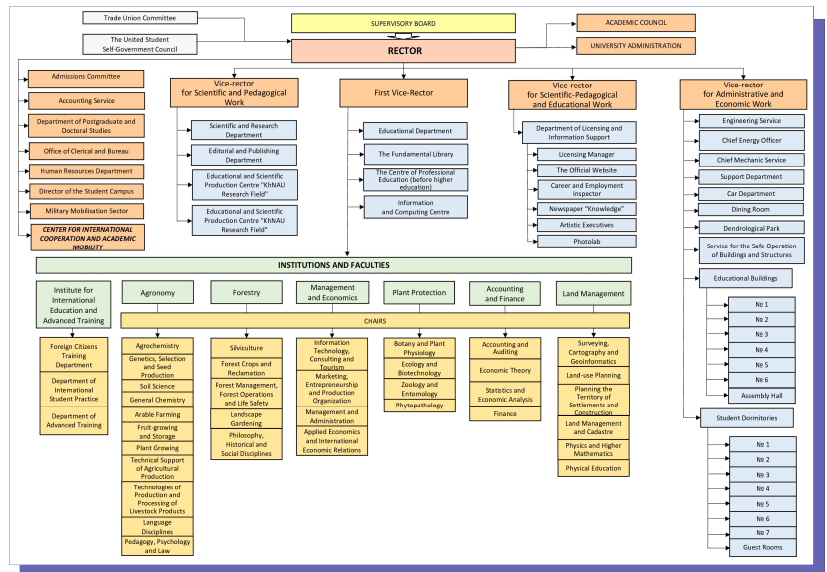
III. Academic Structure



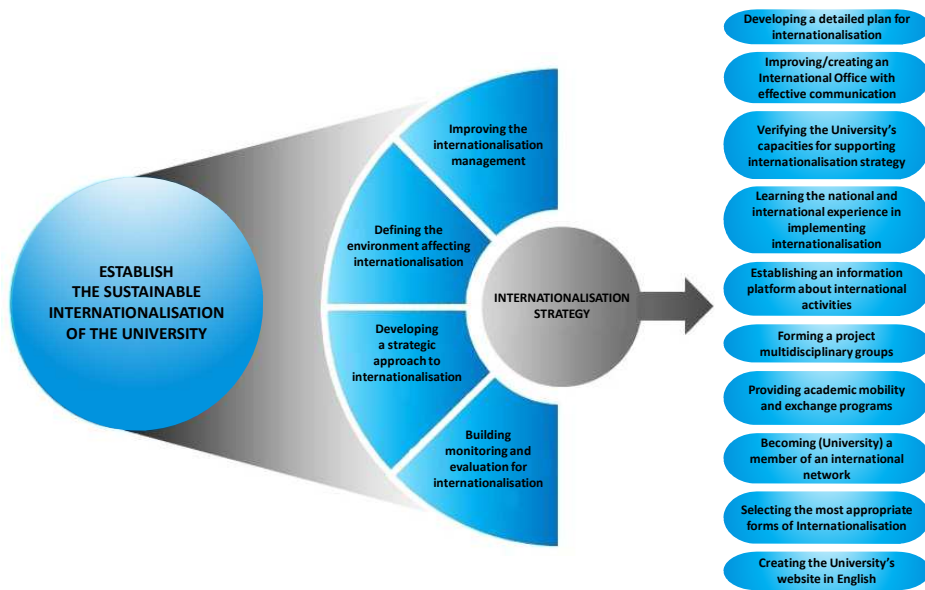
V. Internationalisation structures at the university



IV. Organisational Structure



VI. Internationalisation aims and goals



International collaborations and consortia:
The most important and active partner is the Czech University of Life Sciences Prague



Andriy Popov, D.Sc. in Economics,
Head of the Centre for International Cooperation and Academic Mobility,
Kharkiv National Agrarian University named after V.V. Dokuchayev,
e-mail: popov_andriy@knau.kharkov.ua

